

SCL2

WITH CLAMPING HUB

25 - 100 Nm



NEW

PROPERTIES

FEATURES

- ▶ high torsional stiffness
- ▶ low inertia
- ▶ backlash free

MATERIAL

- ▶ **Disc packs:** highly elastic steel
- ▶ **Hubs and spacer:** aluminium

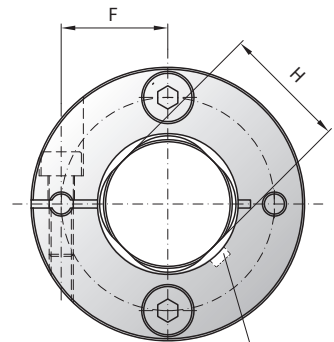
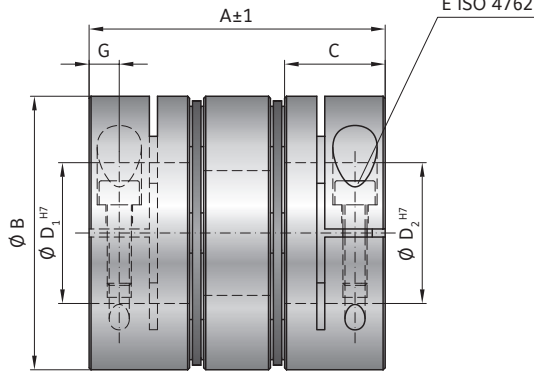
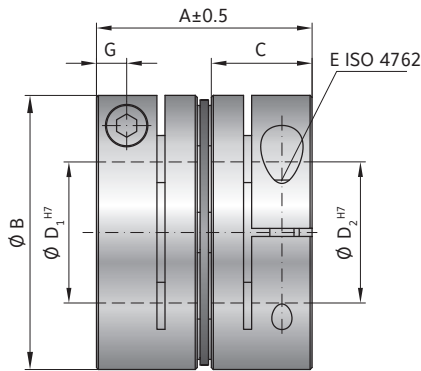
DESIGN

Two precision machined coupling hubs and precision spacer mounted to the disc packs by means of high strength screws and spacers for frictional clamping of the assembly.

Also available as split clamping hub.

S = Single flex coupling

D = Double flex coupling



MODEL SCL2

SIZE			25		40		60		100	
System			S	D	S	D	S	D	S	D
Rated torque	(Nm)	T_{KN}	25		40		60		100	
Maximum torque	(mm)	T_{Kmax}	37.5		60		90		150	
Coupling length	(mm)	A	43.6	60.2	50.9	69.3	53.5	73.6	68.7	98.8
Outside diameter	(mm)	B	56		63		68		82	
Fit length	(mm)	C	20.2		24		25		30	
Bore diameter H7	(mm)	D_1 / D_2	15-30		16-30		25-35		26-40	
Fastening screw		E	M5		M6		M6		M8	
Tightening torque	(Nm)		8		15		15		30	
Distance	(mm)	F	22		23		26.5		28	
Distance	(mm)	G	6		7.5		7.5		8.5	
Shaft diameter limitation	(mm)	H	26		-		31		38	
Moment of inertia	(10^{-3} kgm^2)	J_{ges}	0.095	0.138	0.182	0.256	0.260	0.373	0.706	1.036
Weight	(kg)		0.192	0.284	0.304	0.428	0.363	0.531	0.694	1.022
Torsional stiffness	(Nm/rad)	C_T	46000	23000	58000	29000	82000	41000	157000	78500
Axial displacement	± (mm)		0.4	0.81	0.42	0.85	0.5	1	0.5	1.15
Lateral displacement	± (mm)	max. values	-	0.29	-	0.32	-	0.35	-	0.53
Angular displacement	± (degree)		1	2	1	2	1	2	1	2
Max. speed	(1/min)		10000							

ORDERING EXAMPLE	SCL2	60	D	28	33	XX
Model	●					
Size		●				
System			●			
Bore Ø D1 H7				●		
Bore Ø D2 H7					●	
Special designation only (e.g. balanced G2.5)						
For custom features place an XX at the end of the part number and describe the special requirements (SCL2 / 60 / D / 28 / 33 / XX)						