

# MK3

## WITH EXPANDING SHAFT 0.5 - 10 Nm



### PROPERTIES

#### FEATURES

- ▶ for hollow shaft mounting
- ▶ easy to install
- ▶ light weight and low moment of inertia

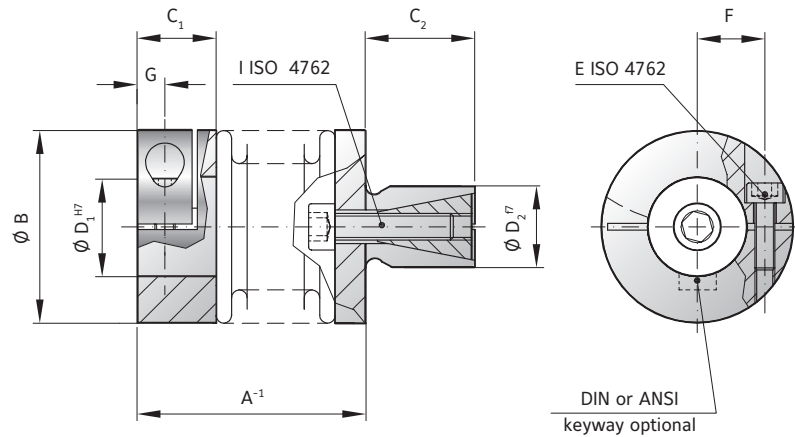
#### MATERIAL

- ▶ **Bellows:** high grade stainless steel
- ▶ **Clamping hub:** aluminium

#### ▶ Expanding shaft: steel

#### DESIGN

One clamping hub with one clamping screw, one expanding shaft system, both concentrically mounted to flexible bellows.



MINIATURE  
COUPLINGS MK

## MODEL MK3

SIZE	5			10			15			20			45		100	
Rated torque (Nm)	0.5			1			1.5			2			4.5		10	
Overall length (mm)	A <sup>-1</sup> 20 23 26			22 25 28			24 30			27 33 36			36 44		41 51	
Outside diameter (mm)	B 15			15			19			25			32		40	
Fit length (mm)	C <sub>1</sub> 9			9			11			13			16		16	
Shaft length (mm)	C <sub>2</sub> 10			10			12			12			15		20	
Inside diameter possible from Ø to Ø H7 (mm)	D <sub>1</sub> 3-7			3-7			4-8			4-12.7			5-16		6-24	
Standard shaft possible from Ø to Ø f7 (mm)	D <sub>2</sub> 8-10			8-10			10-14			10-16			14-20		16-24	
Fastening screw ISO 4762	E M2			M2			M2.5			M3			M4		M4	
Tightening torque of the fastening screw (Nm)	0.43			0.43			0.85			2.3			4		4.5	
Distance between centerlines (mm)	F 4.5			4.5			6			8			10		15	
Distance (mm)	G 3			3			3.5			4			5		5	
Fastening screw ISO 4762	I M3			M3			M4			M4			M5		M6	
Tightening torque of the fastening screw (Nm)	1.5			1.5			3			4			6.5		11	
Moment of inertia (gcm <sup>2</sup> )	J <sub>res.</sub> 2.6 2.8 3.0		3.0 3.4 3.6		8.5 9.5		25 27 29		100 108		160 205					
Torsional stiffness (Nm/rad)	C <sub>T</sub> 280 210 170		510 380 320		750 700		1200 1300 1200		7000 5000		9050 8800					
Axial (mm)	0.4 0.5 0.6		0.4 0.5 0.6		0.5 0.7		0.5 0.6 0.7		0.7 1		1 1.2					
Lateral (mm)	Max. values 0.15 0.2 0.25		0.15 0.2 0.25		0.15 0.2		0.15 0.2 0.25		0.2 0.25		0.2 0.25		0.2 0.3			
Angular (degree)	1 1.5 2		1 1.5 2		1.5 1.5		1.5 1.5 2		1.5 2		1.5 2		1.5 2			

ORDERING EXAMPLE	MK3	20	36	6.35	12	XX
Model	●					Special designation only (e.g. special bore / shaft tolerance).
Size		●				
Overall length mm			●			
Bore D1 H7				●		
Shaft D2 f7					●	

For custom features place an XX at the end of the part number and describe the special requirements (e.g. MK3 / 20 / 36 / 6.35 / 12 / XX; XX=finely balanced for 25,000 rpm)